



## CINEVIEW 5

For mid-size theatre presentations

Compact, yet exceptionally powerful the CINEVIEW 5 is the affordable solution for high standard theater presentations, digital advertising and business presentations on screens of up to 10 m (33ft) wide. Featuring high resolution Texas Instruments 3-chip DLP™ technology, CINEVIEW 5 combines a powerful 5000 lumens light output with a range of features that set new standards in reliability, operating flexibility and low cost maintenance.

### **The show always goes on!**

CINEVIEW 5 combines simple operation with the peace of mind of a durable modular construction for superb reliability and quick lamp and processor exchange

### **Superb performance, every time**

A unique combination of sealed optics protect the CINEVIEW 5 prism and DMD™ mirrors from harmful dust particles, and advanced Barco Constant Light Output (CLO) processing is guaranteed to ensure the superior quality of the CINEVIEW 5 display for longer.

### **Professional Presentation Flexibility**

While a wide range of analog and digital input options ensure compatibility with all existing and known future STV and HDTV standards, "click-and-play™" lenses ensure that the projector can be set for any presentation in just seconds to ensure a quick set up and professional presentation quality every time.



**BARCO**

innovators in image processing

# Features and specifications

## Light Output

5000 ANSI lumens

## Brightness Uniformity

> 90% for the total screen area

## Digital Micromirror Device™

Three high resolution XGA DMDs

## Lamp

1.2 kW Xenon illumination system  
Typical lifetime: 1000 hrs,  
Maximum lifetime: 1500 hrs  
Linked CLO

## Contrast Ratio

500:1 (full white/full black)

## Resolution

1024 x 768 (XGA)

## Lens Shift

Motorized V shift: up to 118%  
Motorized H shift: up to 71%

## Lens Type      Throw Ratio

Fixed Lens (Manual Focus):

TLD (0.8:1)      0.8

TLD (1.2:1)      1.2

Motorized Zoom and Focus:

TLD (1.6-2.0:1)    1.6-2.0

TLD (2.0-2.8:1)    2.0-2.8

TLD (2.8-5.0:1)    2.8-5.0

TLD (5.0-8.0:1)    5.0-8.0

## Remote Control

All controls are accessible through a soft-touch panel, a user-friendly back-lit infrared remote control of:

- Source switching
- User settings per source
- Installation and service adjustments

## Noise Level

< 50 dBA

Active noise reduction

## Other Features

- Click-and-play™ "fast swap" lenses
- Sealed optics
- Built-in light shutter
- Modular structure
- Constant Light output (CLO)
- True seamless switching with cross-fade effects

## Compatibility

- Pixel map processor for computers and workstations with a resolution of up to 1600 x 1200 pixels
- All current video sources in Composite, S-VHS, RGB or Component or Serial Digital Format
- All currently proposed HDTV, extended and improved television standards (Eureka 95, Hi-Vision, ACTV, IDTV, EDTV,...)
- Most Macintosh computers
- Two digital input slots to allow for direct digital interfacing with current SD & HD inputs

## Standard Analog Inputs

Two multifunctional 5-Cables input (high band width) for the connection of:

- RGB analog signals with standard sync (BNC connectors) or tri-level sync, sync on green or separate sync
- Standard Video signals
- S-VHS signals Standard Digital Input

## Standard Digital Input

The SDI loop through (Serial Digital Input)

## Optional Digital Inputs

- SDI loop through (Serial Digital Input)
- HD-SDI loop through (High Definition Serial Digital Input)

## Communication

- RS232 or RS422 loop-through input (D9-connector) for PC based projector control
- Panel link (2 x in, 1 x out)
- Communication input (D9-connector) for peripherals
- 3 Pin male XLR connector for wired remote (standard remote)
- 3 Pin female XLR connector for bi-directional communication (ruggedized remote)

## Power Consumption

1600 Watt

## AC Power

230V (tolerance 180V - 255V)

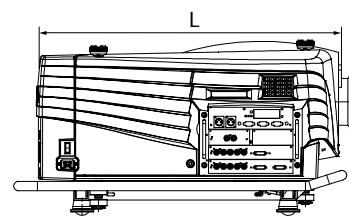
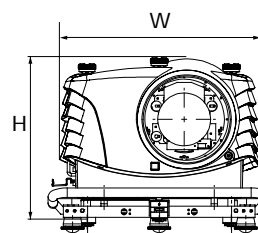
## Weight

Net weight 45 kg / 99 lbs

## Order Information

CINEVIEW 5	R9001890
TLD (0.8:1)	R9840900
TLD (1.2:1)	R9840770
TLD (1.6-2.0:1)	R9840670
TLD (2.0-2.8:1)	R9840680
TLD (2.8-5.0:1)	R9840690
TLD (5.0-8.0:1)	R9840910
SDI	R9840110
HD-SDI	R9840450

Dimensions	mm	inch
L	795	31.3
W	529	20.8
H	372	14.6



BARCO Projection Systems is an ISO 9001 registered company.

The information and data given are typical for the equipment described. However any individual item is subject to change without any notice.



**Barco Digital Cinema - Belgium**  
Noordlaan 5, 8520 Kuurne  
Tel: +32-56-36 84 93 Fax: +32-56- 36 88 62  
E-mail: info.bdc.bps@barco.com

**Barco Inc. - USA**  
3240 Town Point Drive, Kennesaw, GA 30144  
Tel. (770) 218-3200 Fax (770) 218-3250  
E-mail: sales.us.bps@barco.com

[www.barco.com](http://www.barco.com)

**BARCO**

Ref. no: R5995819 - April 2001 - Printed in Belgium